

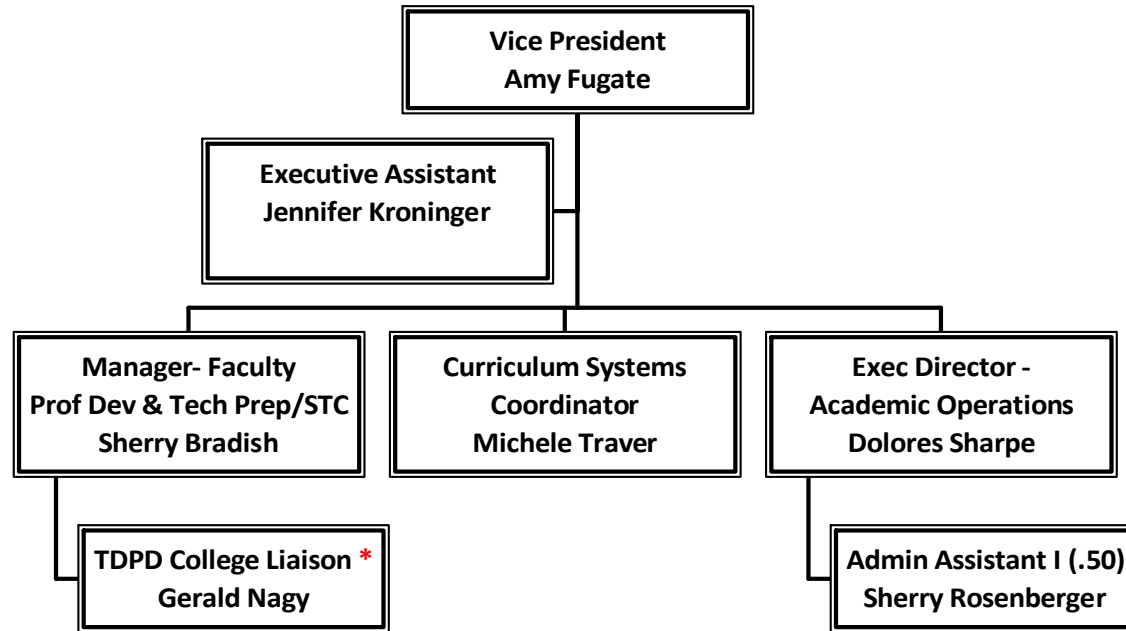
Mott Community College Organizational Charts

Academic Affairs (Office of the Vice President).....	3
Academic Affairs (Overview)	4
Accounting & Budget	5
Admissions	6
Athletics	7
Auxiliary Services	8
Business.....	9
Career & Technical Education.....	10
Cashier	11
Chief Financial Officer (Overview)	12
College Overview	13
Computing & Network Services.....	14
Continuing Education & Extension Sites.....	15
Corporate Services/SLBC.....	17
Counseling & Student Development	18
Custodial Services	19
e-Learning & Web Services	21
Educational Media Services	22
Enterprise Architecture.....	23
Fine Arts	24
Foundation & College/Community Advancement	26
Grant Development	27
Health Sciences	28
Human Resources	29
Humanities	30
Information Technology Services	31
Learning Center & DisAbility Services.....	32
Library Services	33
Maintenance & Grounds Operations.....	34
Marketing & Public Relations	35
Office of Physical Plant	36
Planning, Research & Quality Initiatives.....	37
Public Safety.....	38
Purchasing.....	39

Regional Technology Initiatives	40
Registrar & Registration.....	41
Science & Math	43
Social Science	44
Student & Administrative Services (Office of the Vice President).....	45
Student & Administrative Services (Overview).....	46
Student Financial Services	47
Student Services (Office of the Executive Dean)	48
Student Services (Overview).....	49
Student Services Communications	51
Technology.....	52
Upward Bound Programs.....	53
Workforce & Career Development	54
Workforce & Career Development (Grant-Funded).....	55

Academic Affairs (Office of the Vice President)

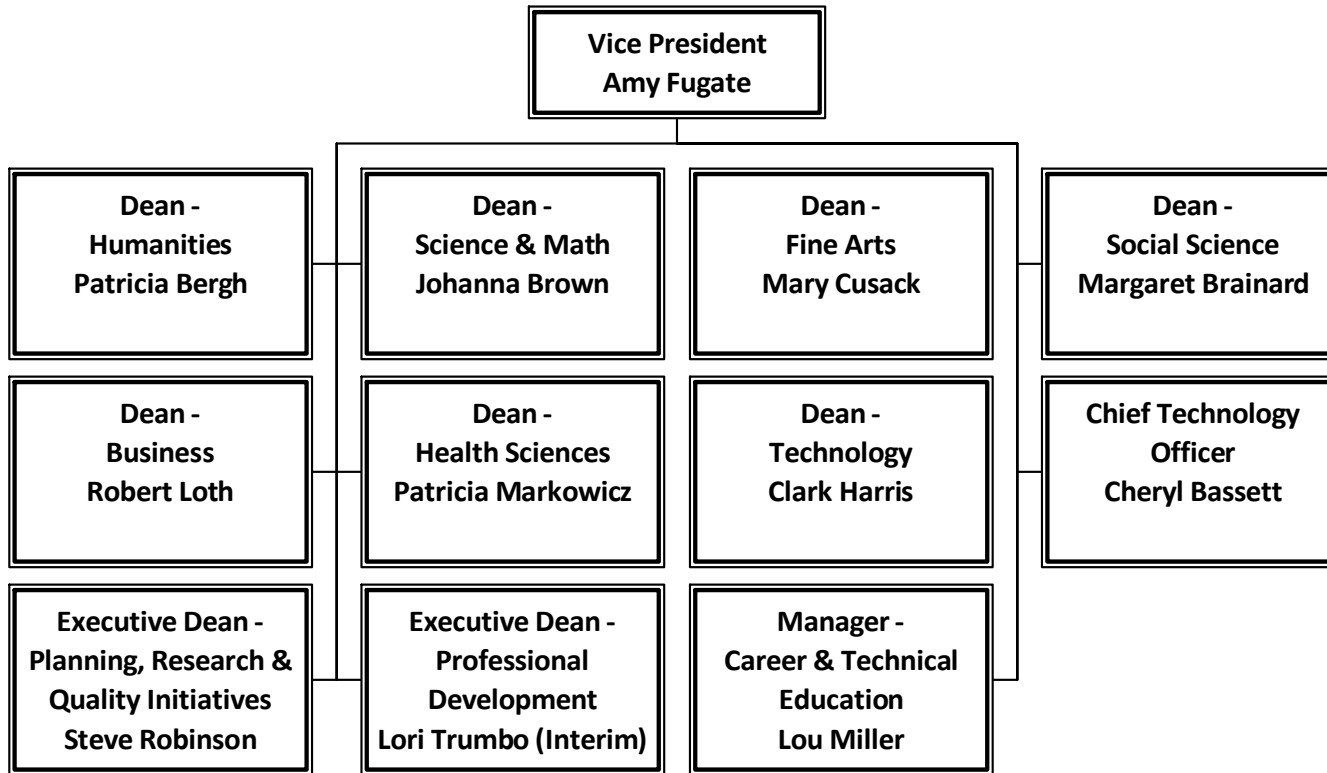
February 28, 2010



* Supplemental TAP

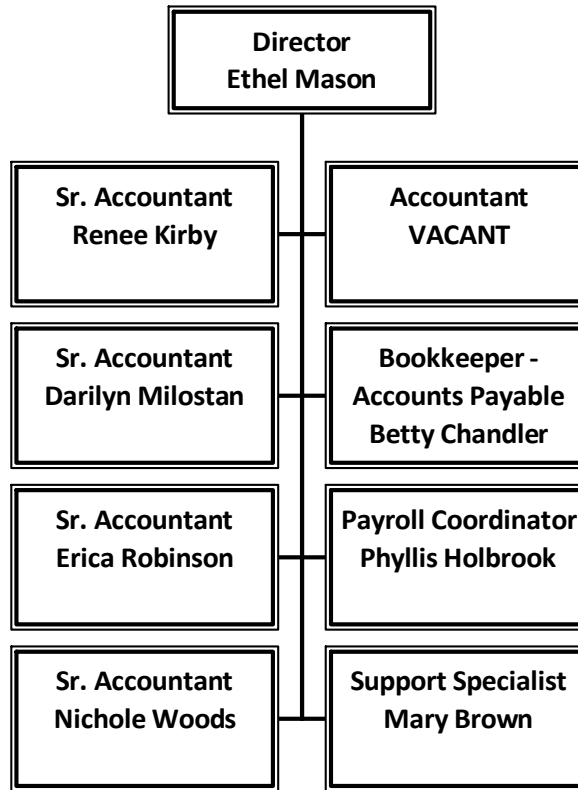
Academic Affairs (Overview)

February 28, 2010

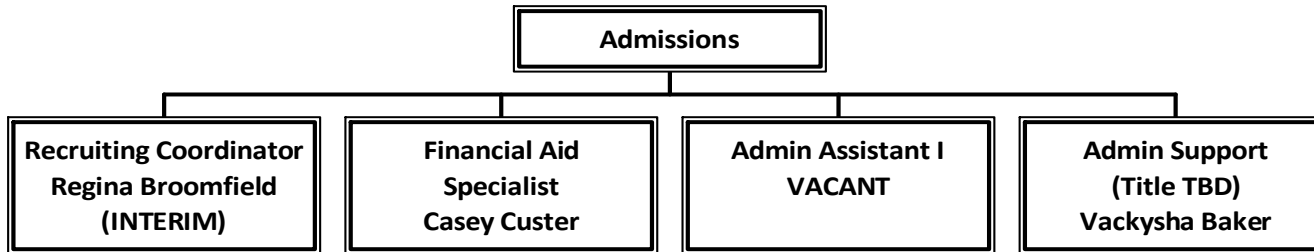


Accounting & Budget

February 28, 2010

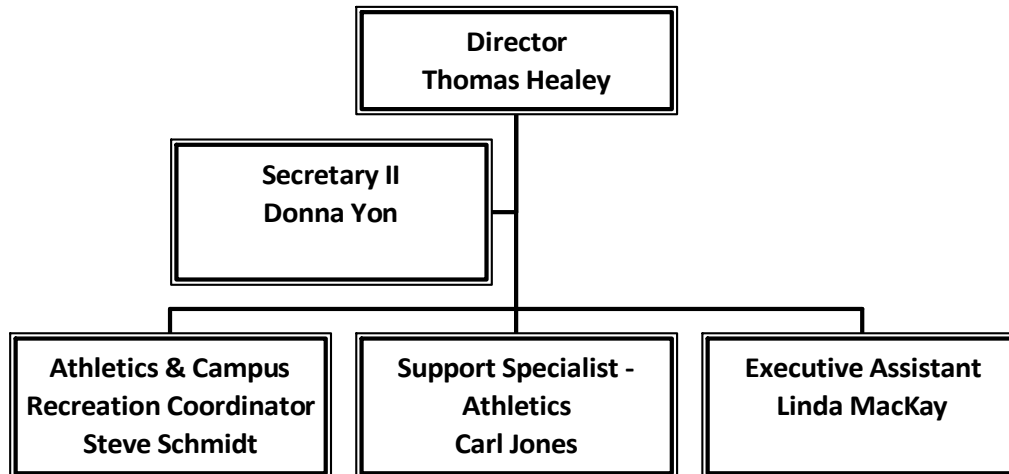


Admissions
February 28, 2010



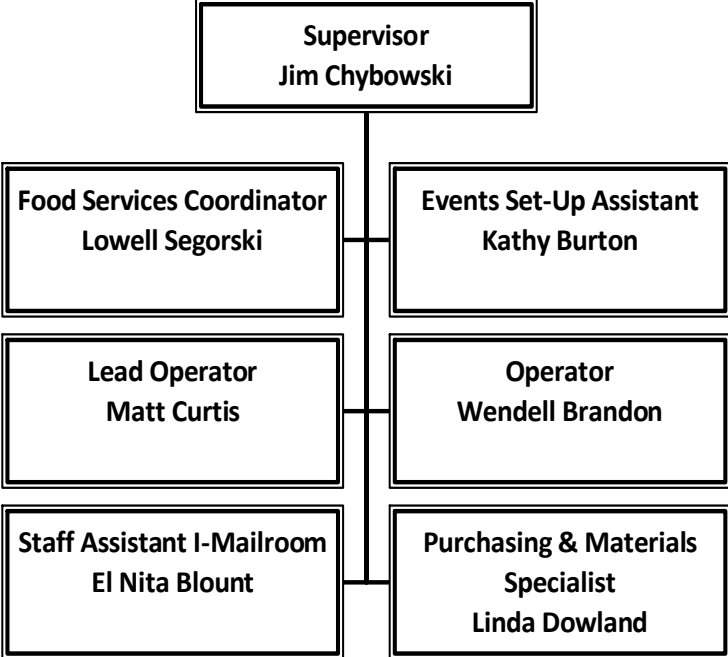
Athletics

February 28, 2010



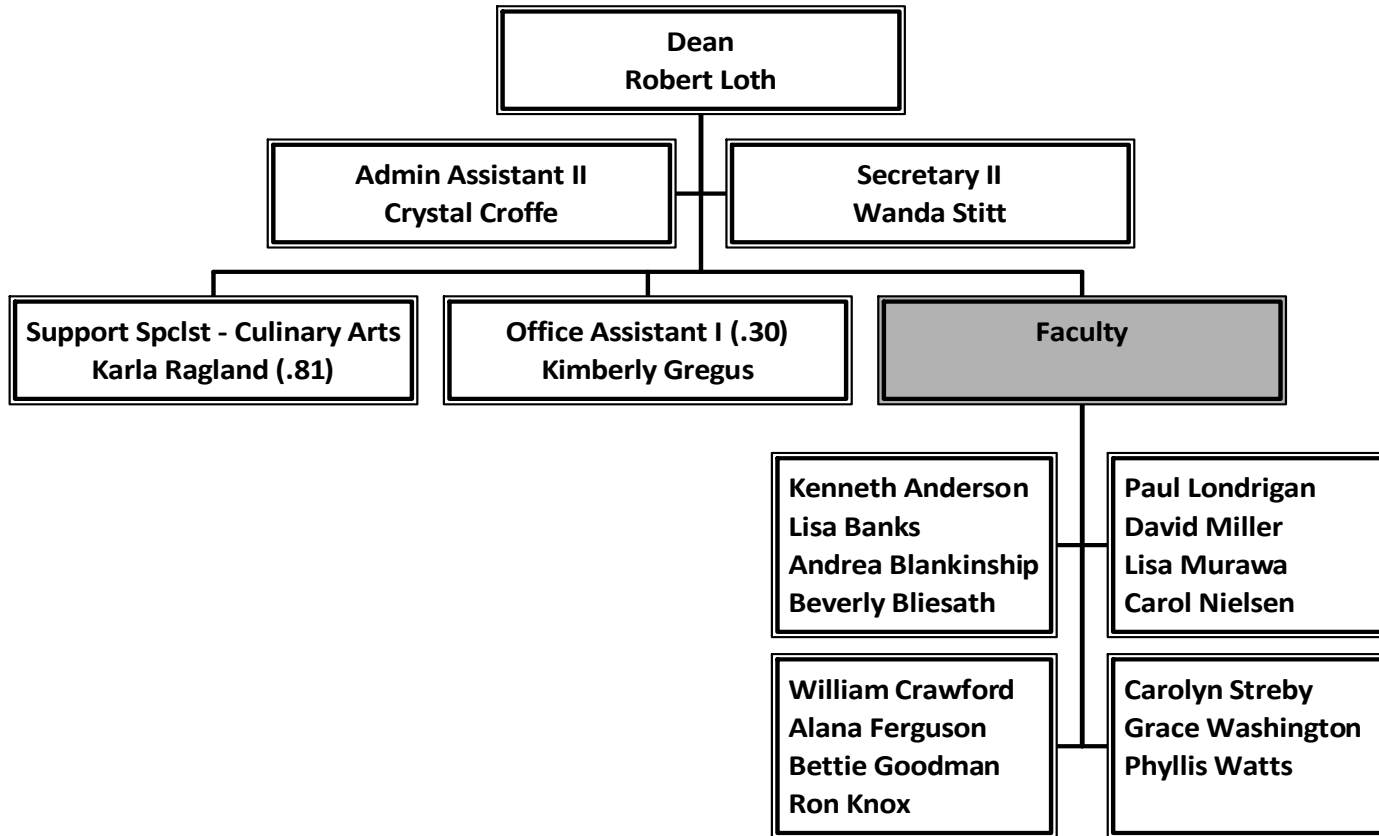
Auxiliary Services

February 28, 2010



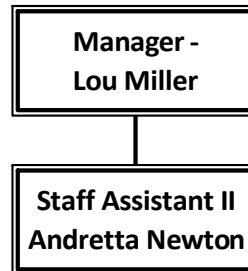
Business

February 28, 2010

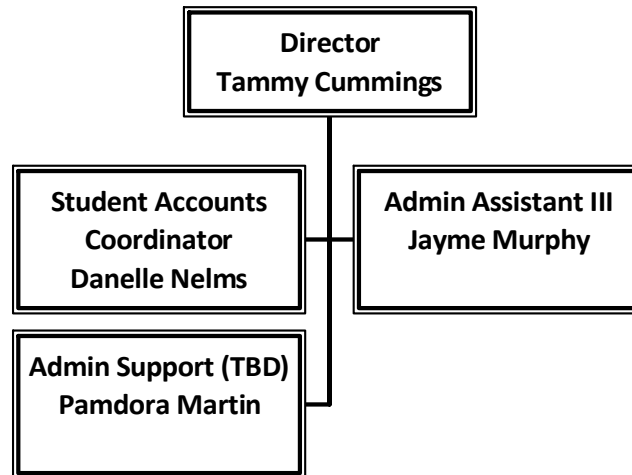


Career & Technical Education

February 28, 2010

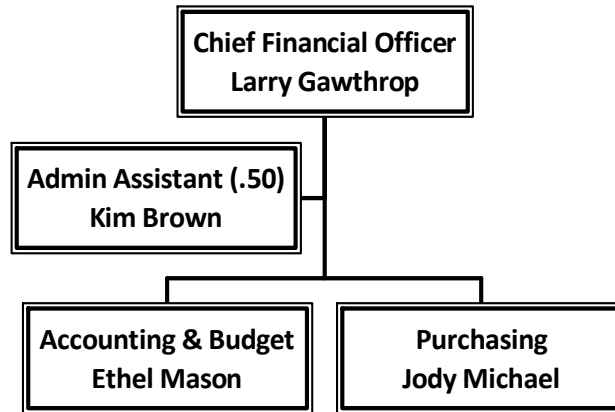


Cashier
February 28, 2010



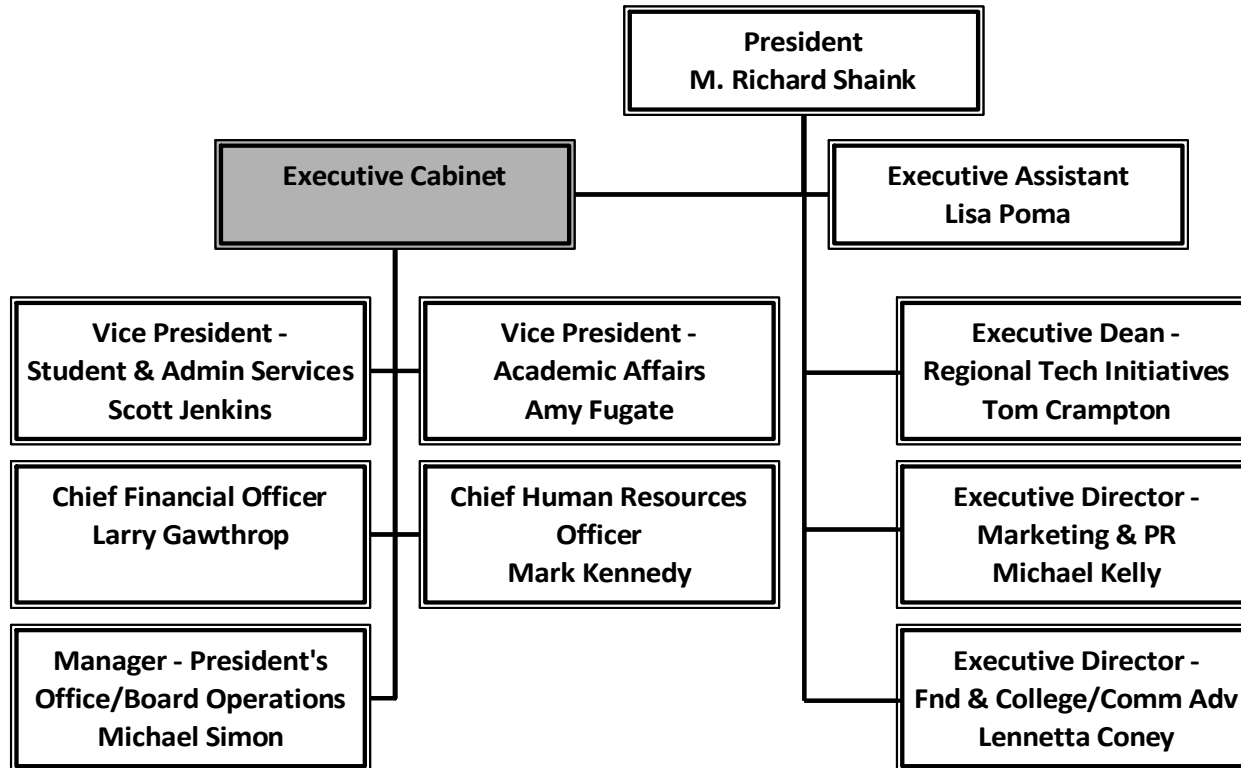
Chief Financial Officer (Overview)

February 28, 2010



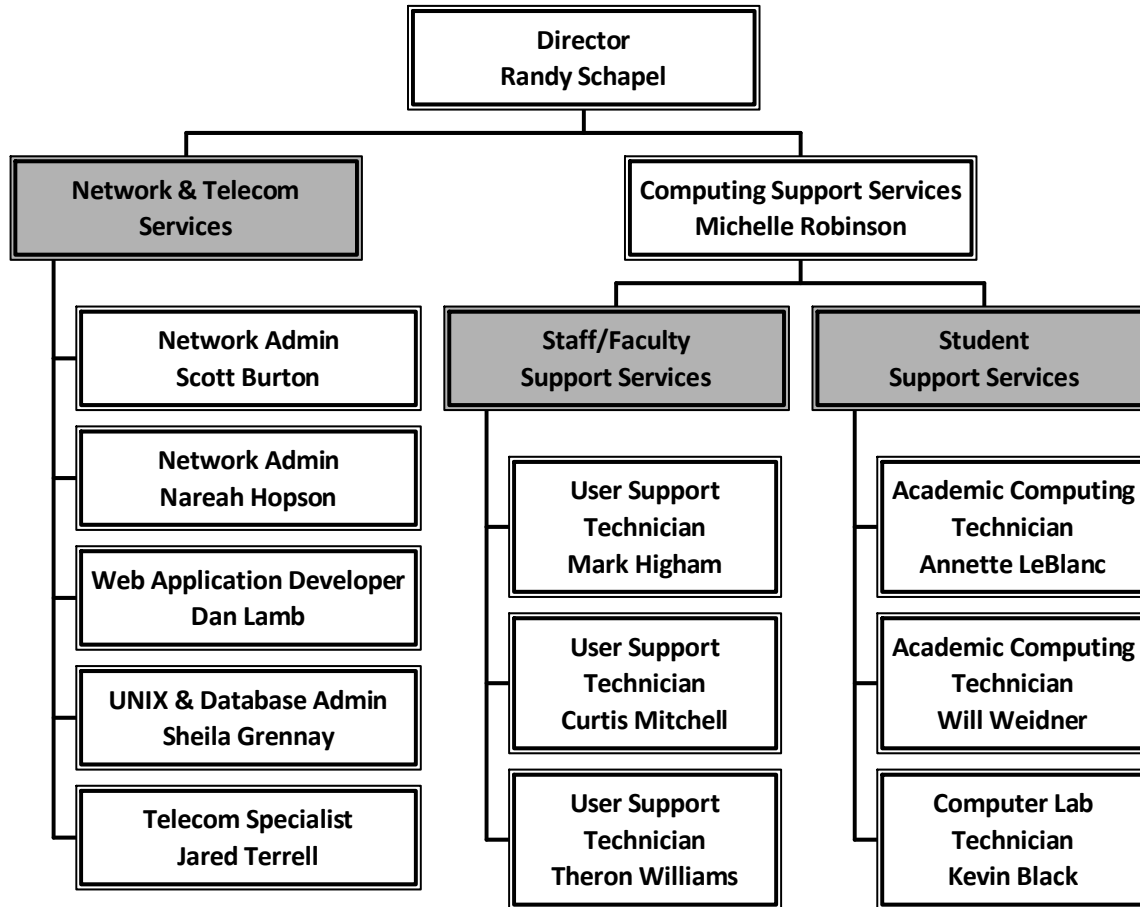
College Overview

February 28, 2010



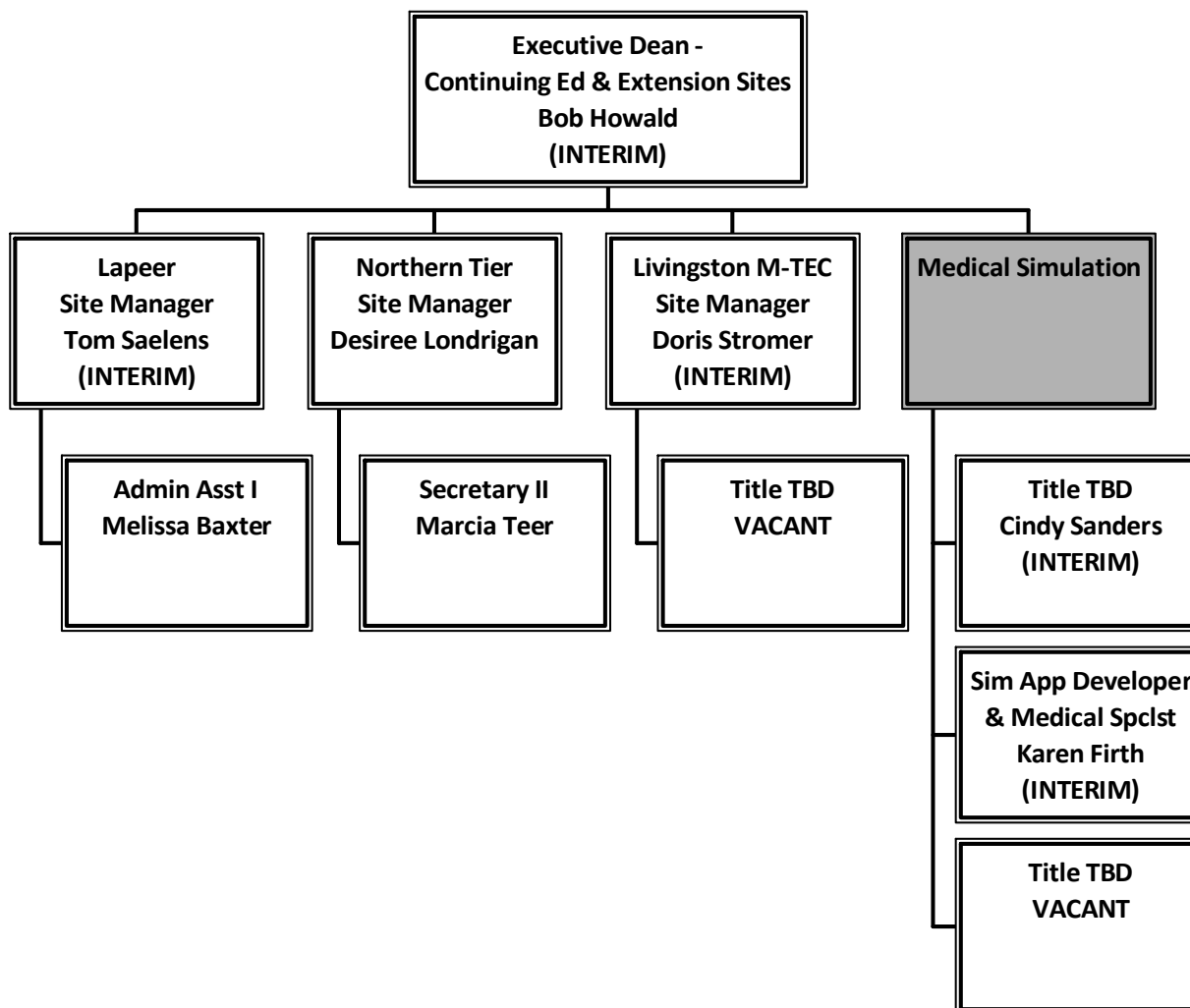
Computing & Network Services

February 28, 2010



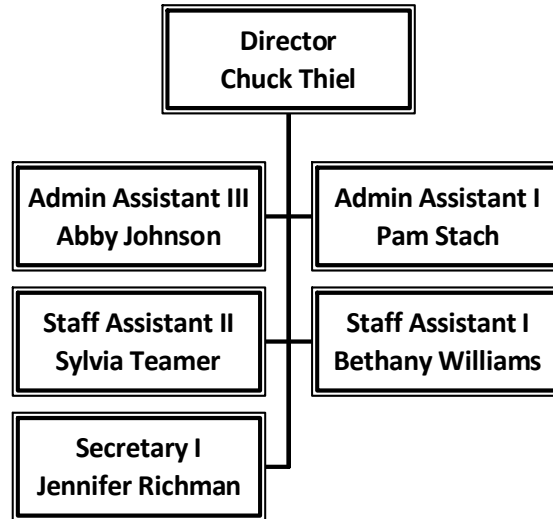
Continuing Education & Extension Sites

February 28, 2010



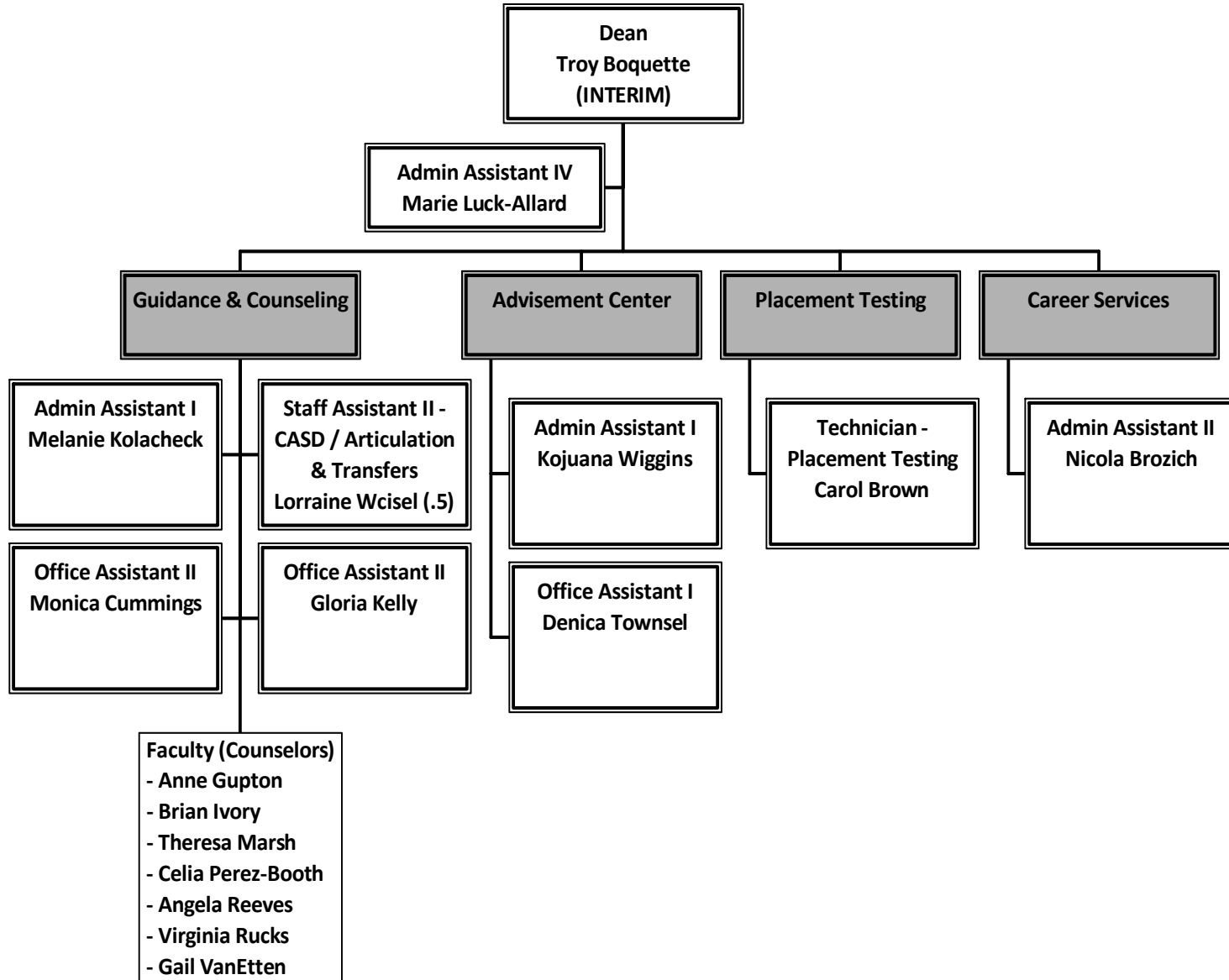
Corporate Services/SLBC

February 28, 2010



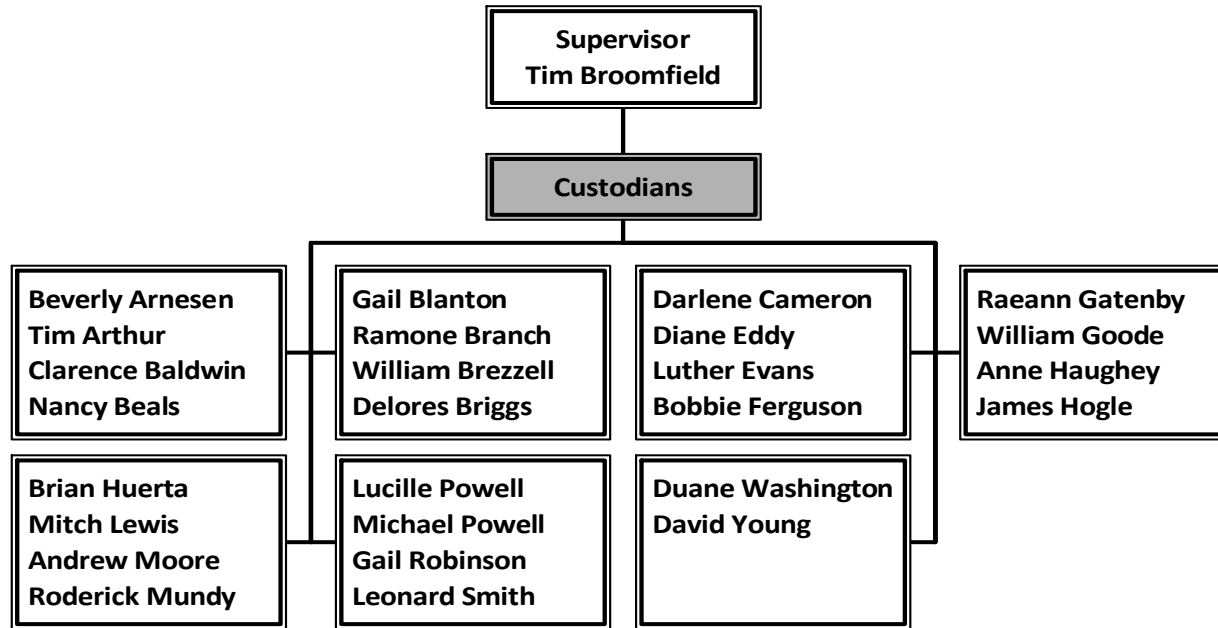
Counseling & Student Development

February 28, 2010



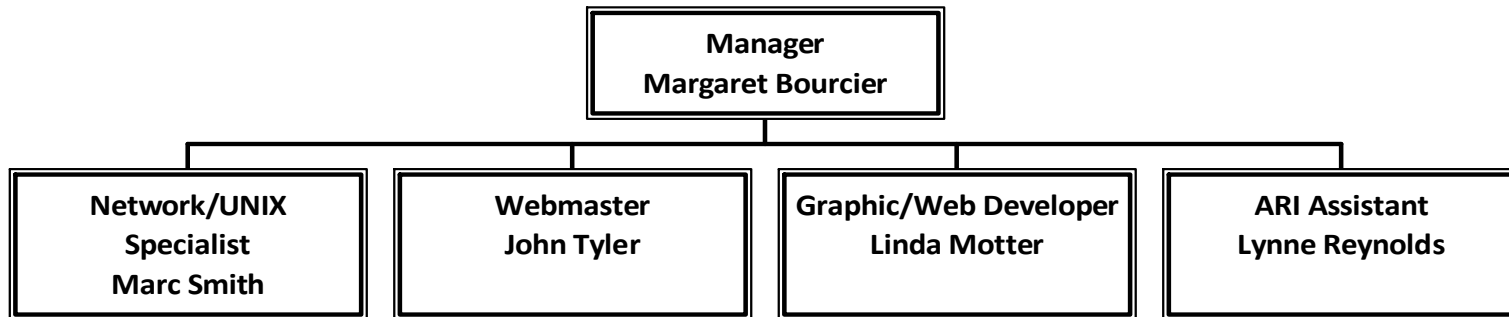
Custodial Services

February 28, 2010



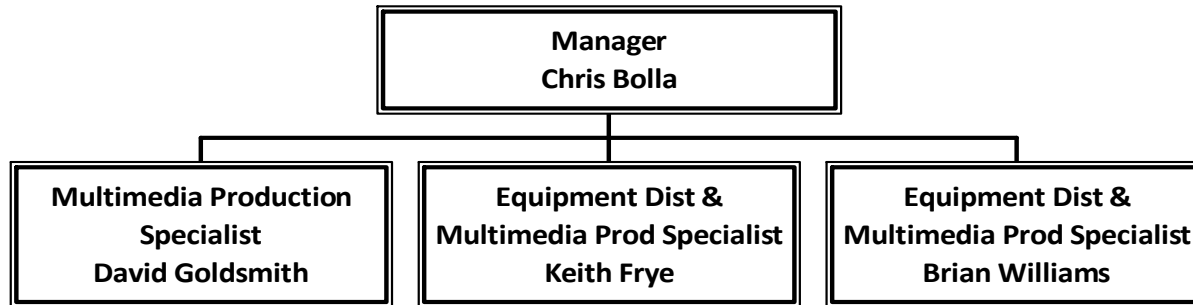
e-Learning & Web Services

February 28, 2010



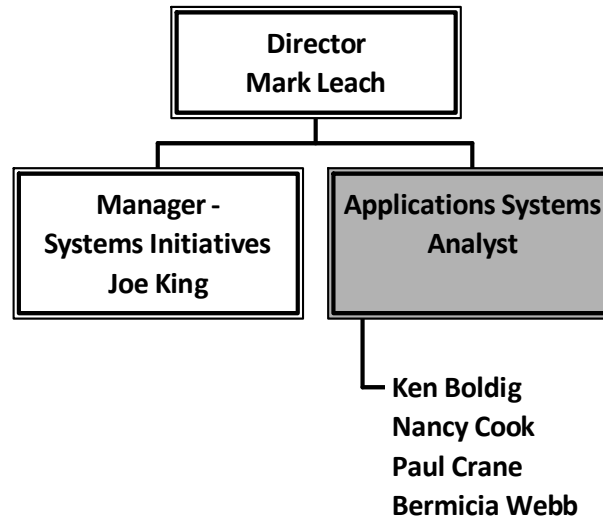
Educational Media Services

February 28, 2010

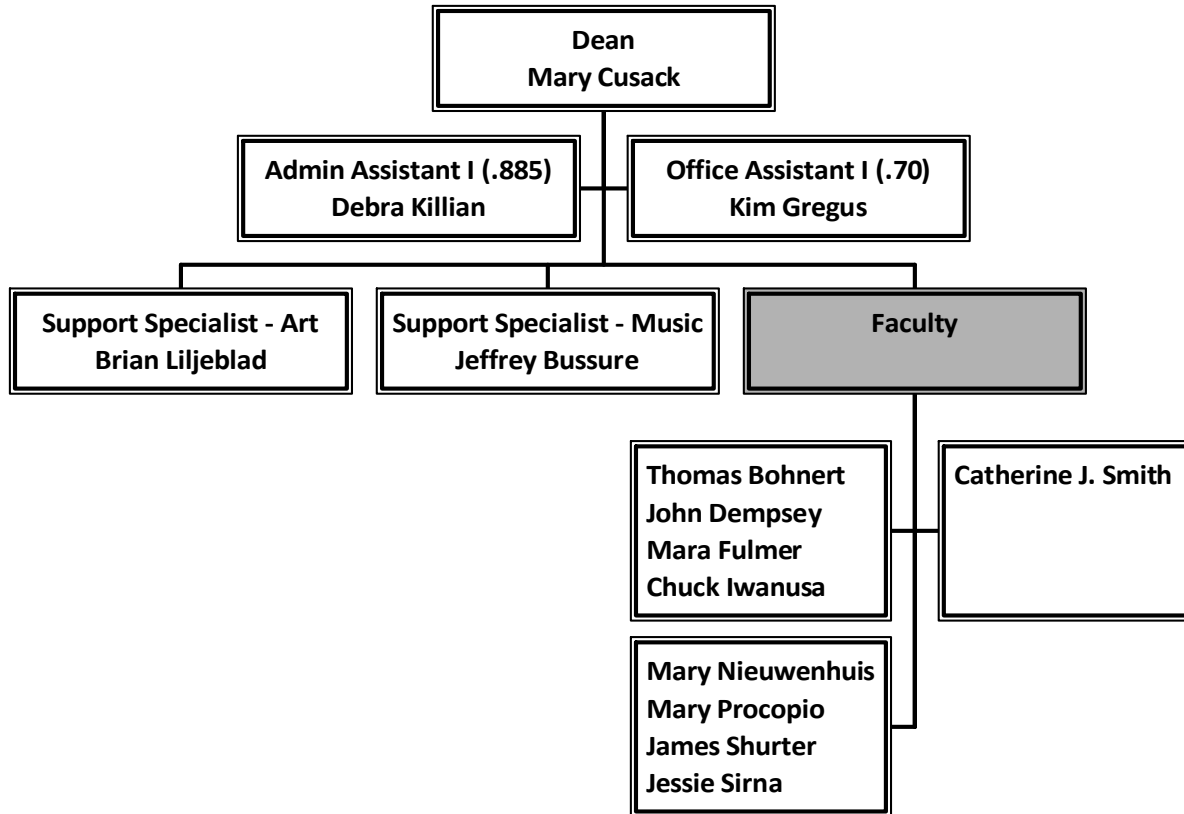


Enterprise Architecture

February 28, 2010

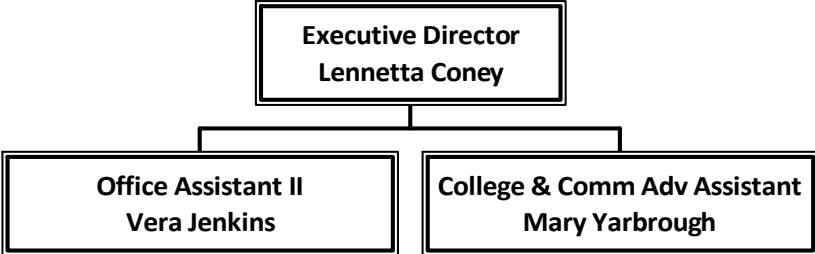


Fine Arts
February 28, 2010



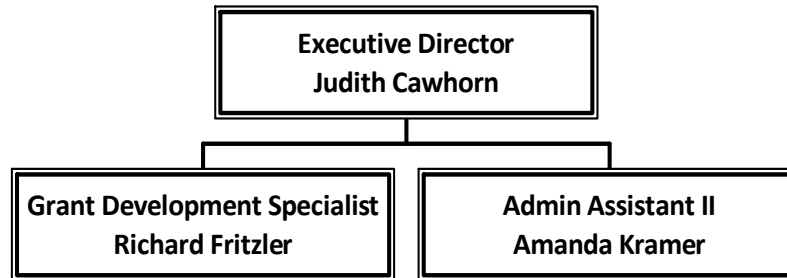
Foundation & College/Community Advancement

February 28, 2010



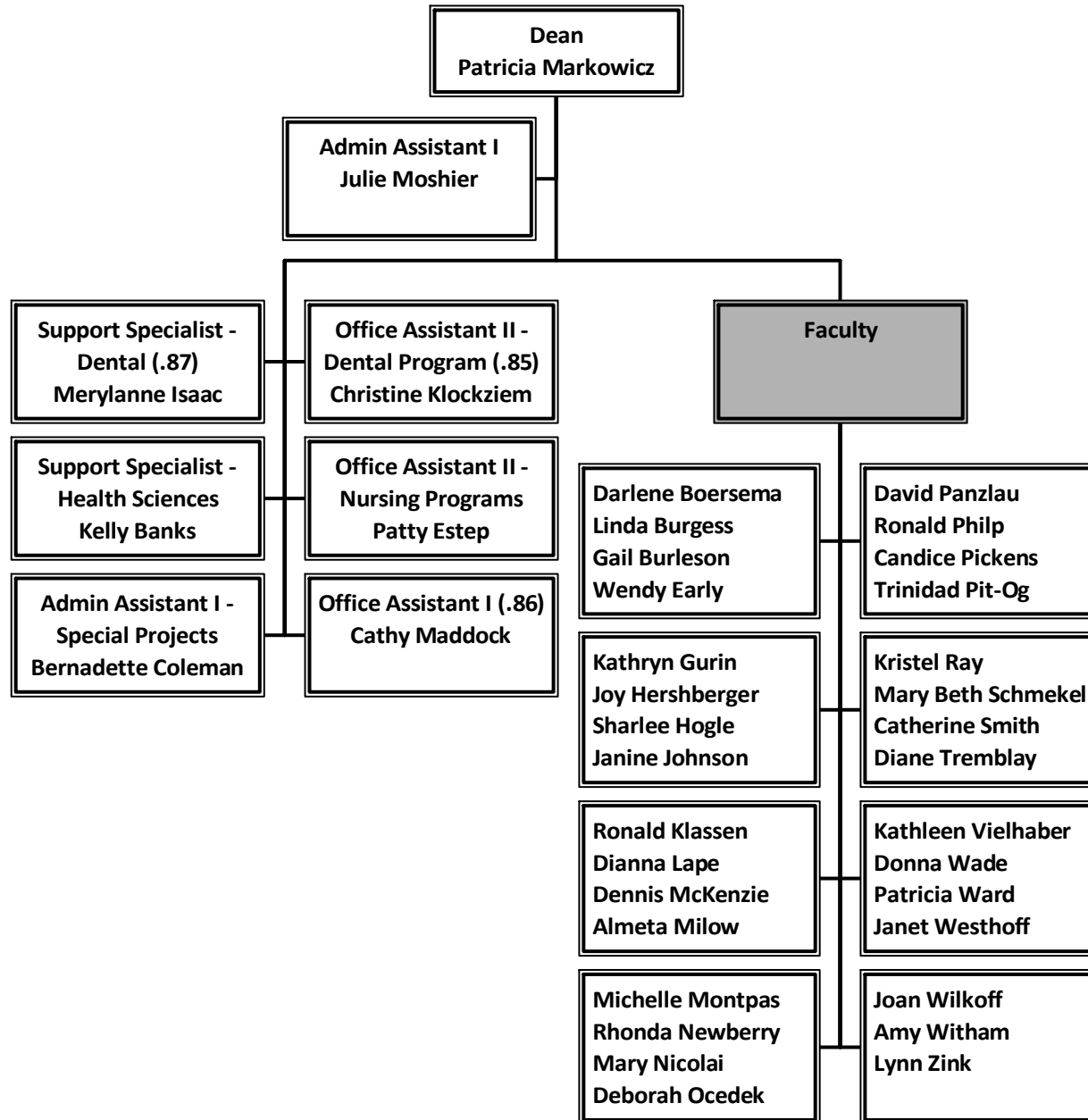
Grant Development

February 28, 2010



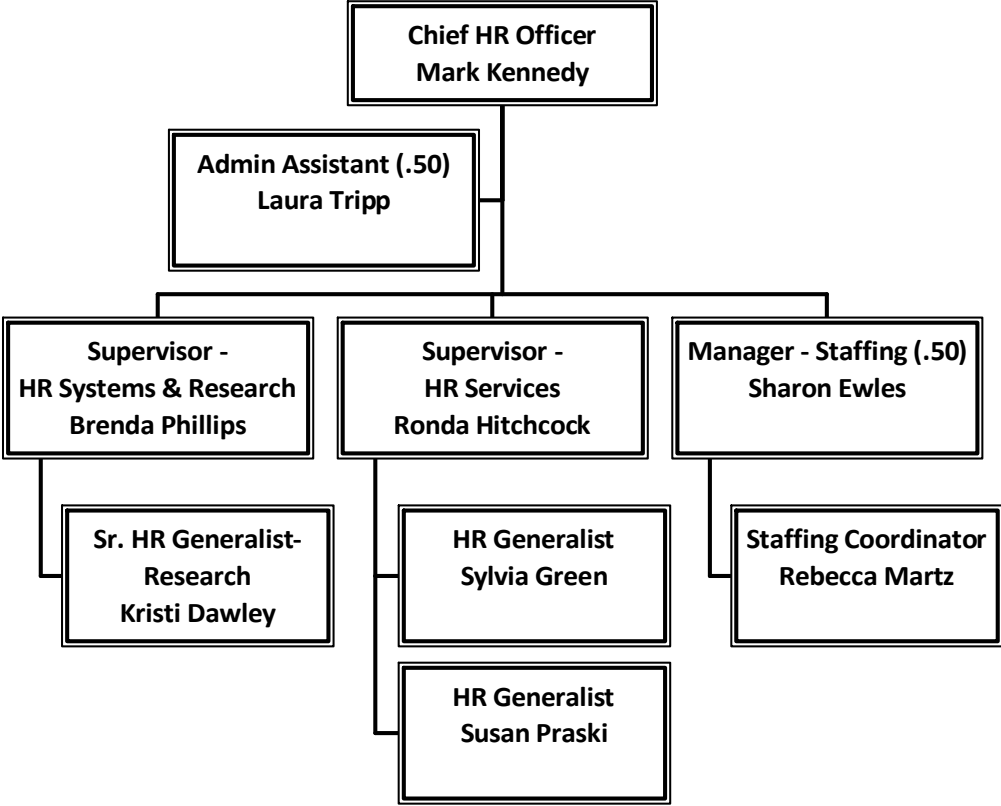
Health Sciences

February 28, 2010

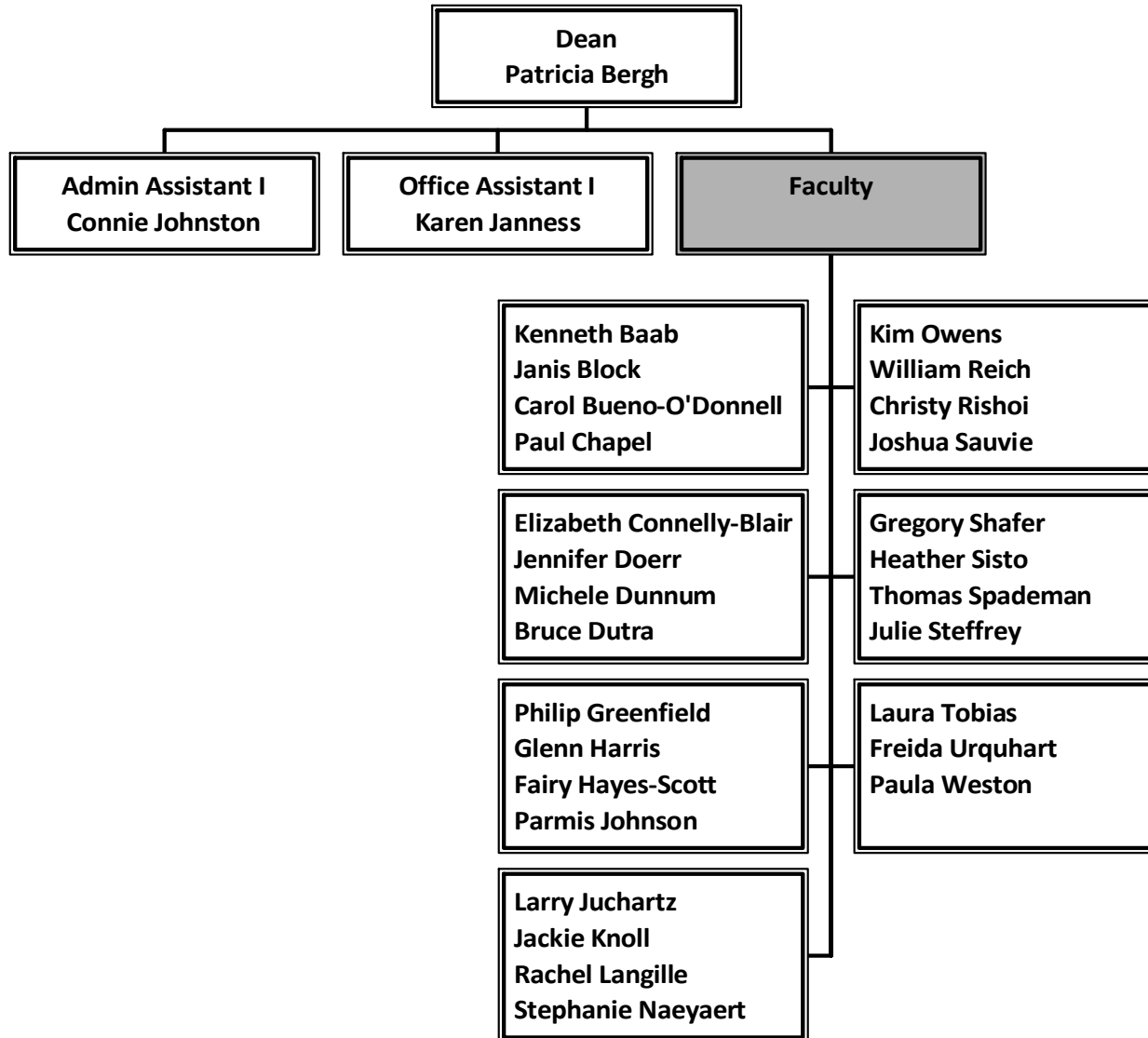


Human Resources

February 28, 2010

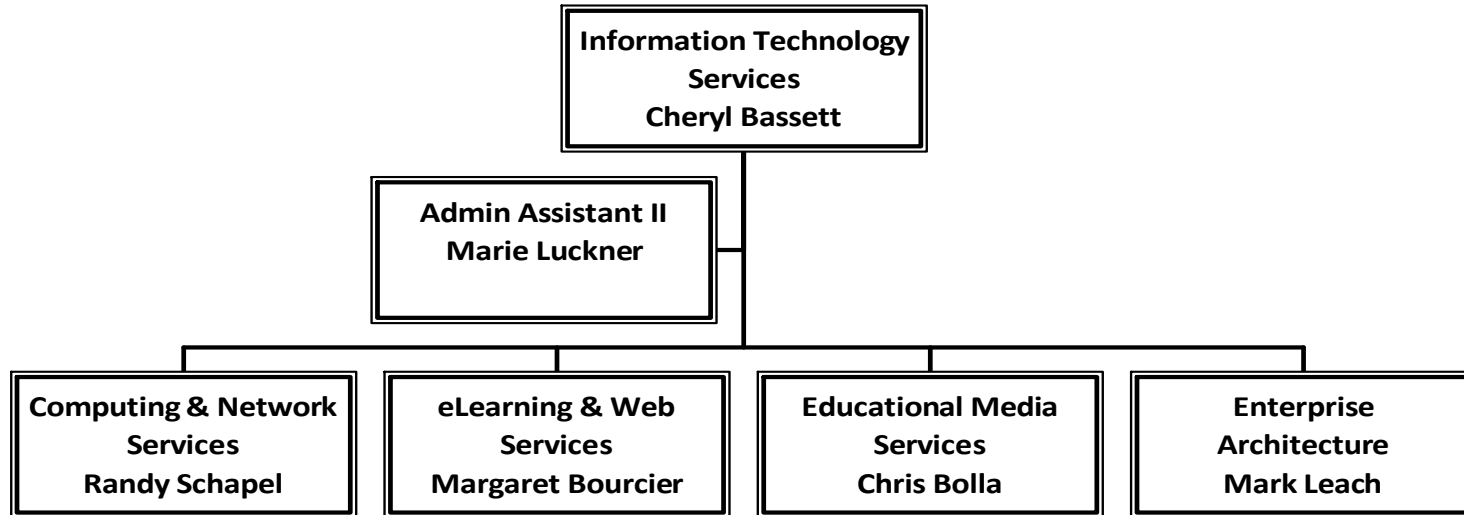


Humanities
February 28, 2010



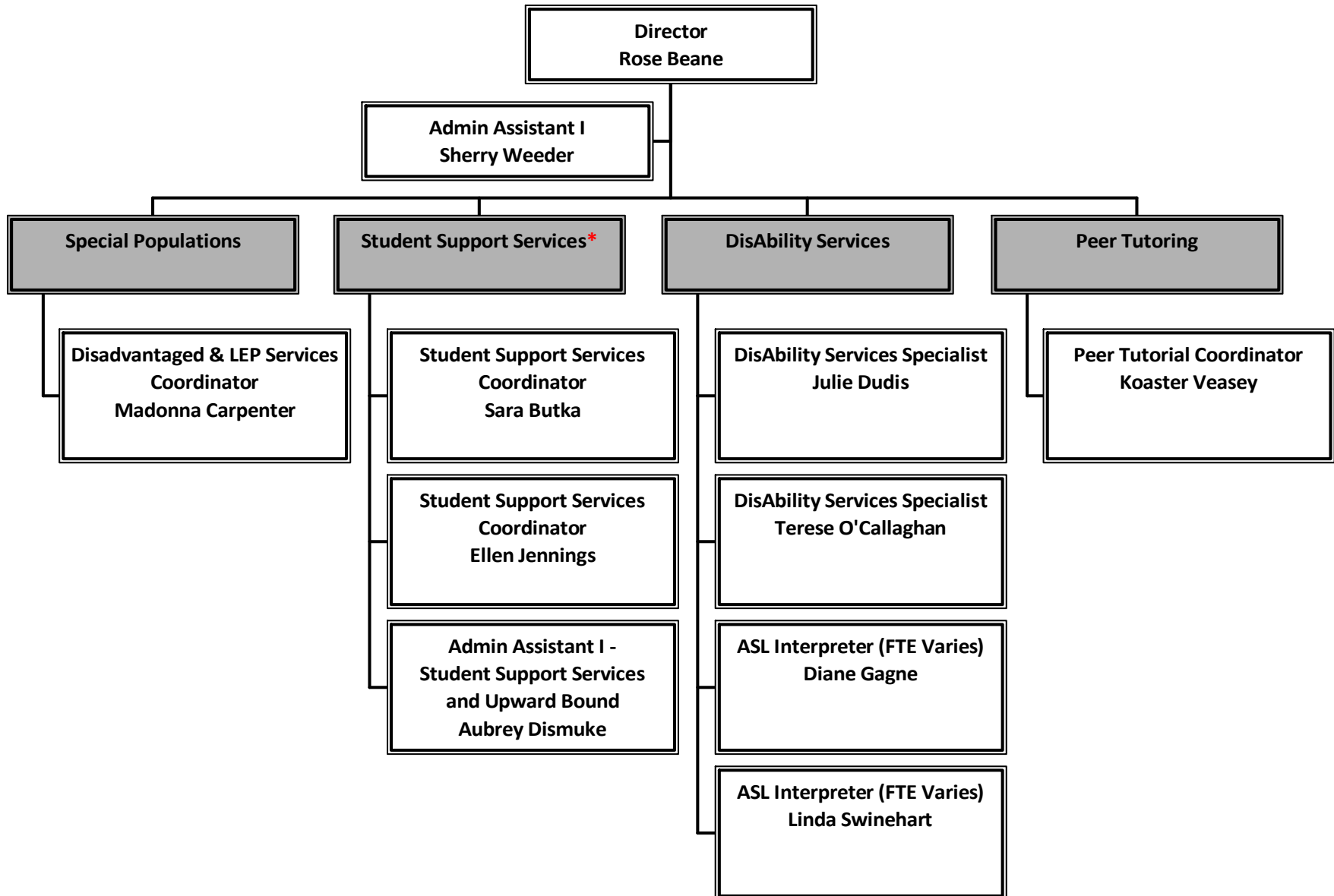
Information Technology Services

February 28, 2010



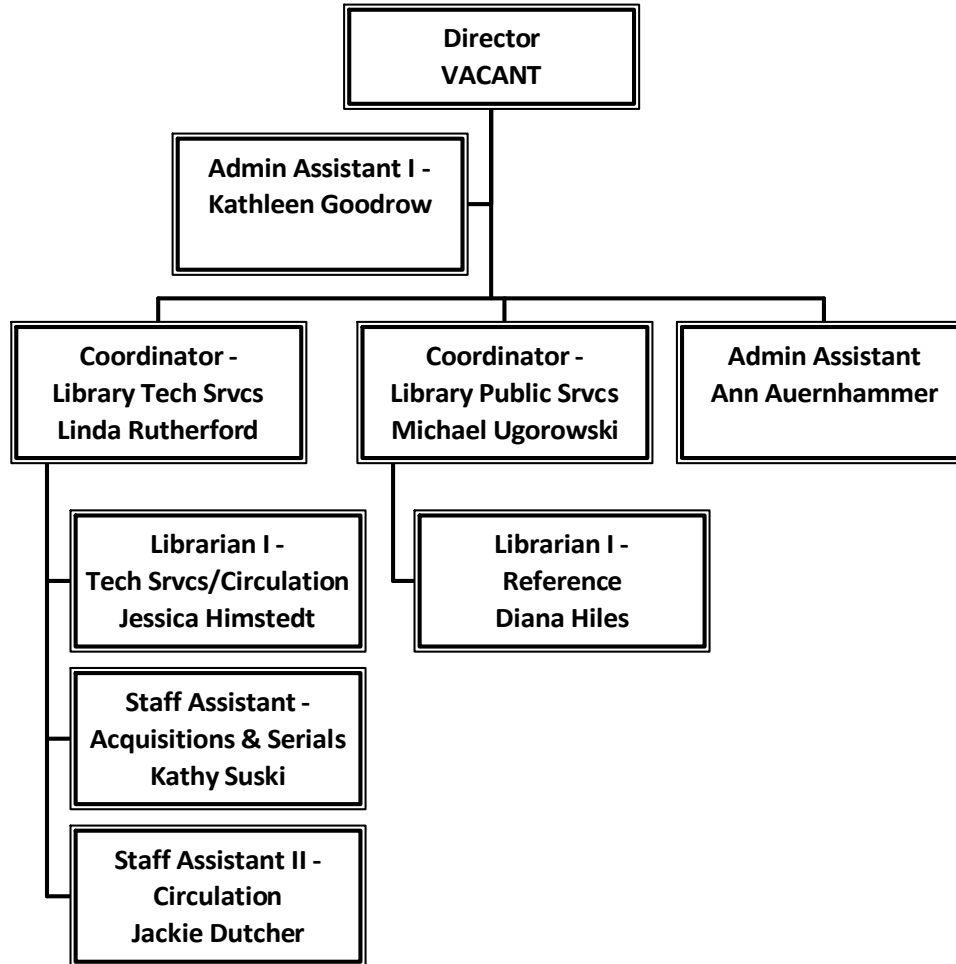
Learning Center & DisAbility Services

February 28, 2010



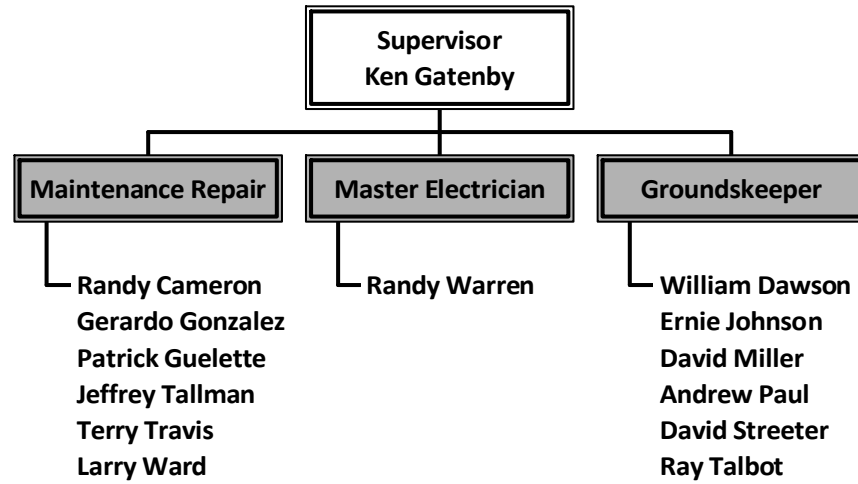
* Supplemental TAP

Library Services
February 28, 2010



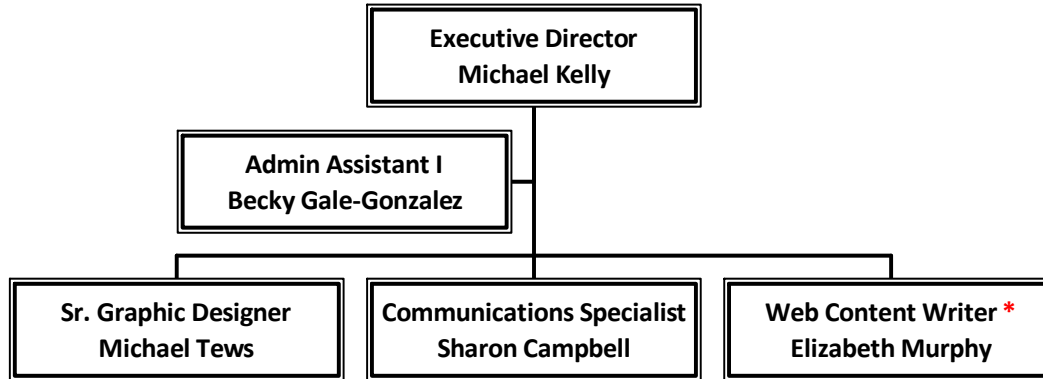
Maintenance & Grounds Operations

February 28, 2010



Marketing & Public Relations

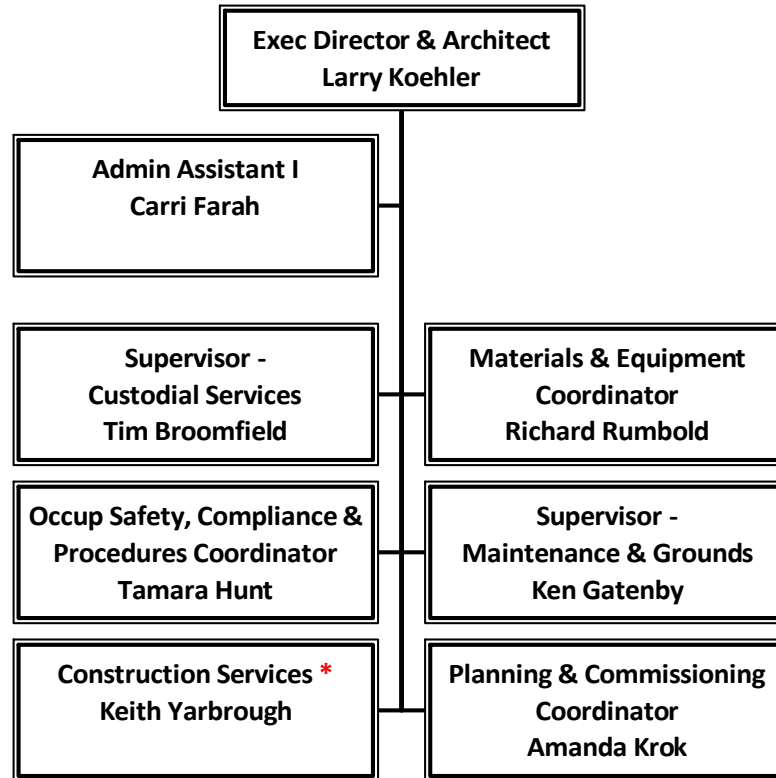
February 28, 2010



** Supplemental TAP*

Office of Physical Plant

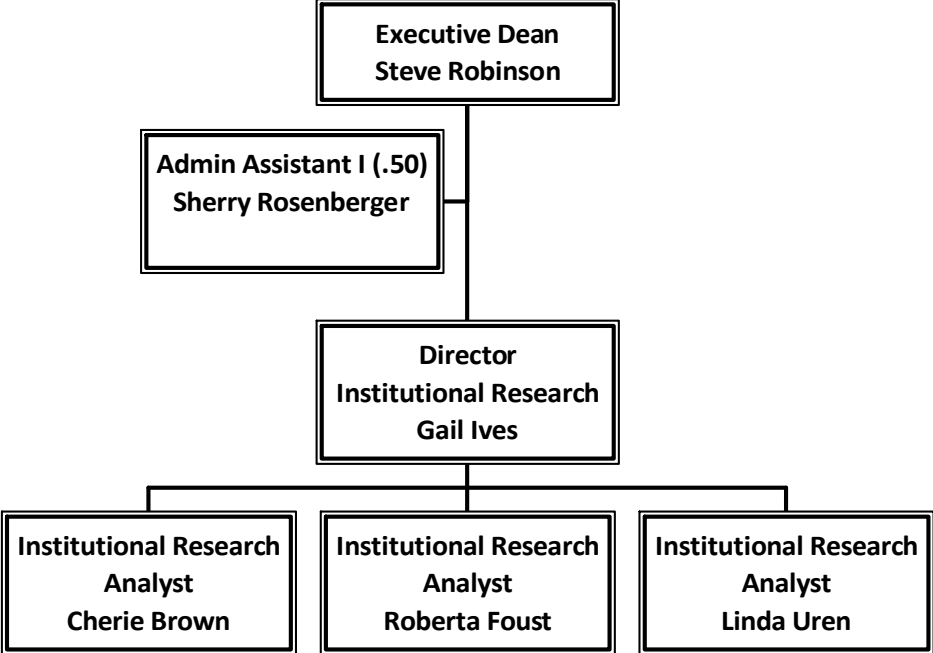
February 28, 2010



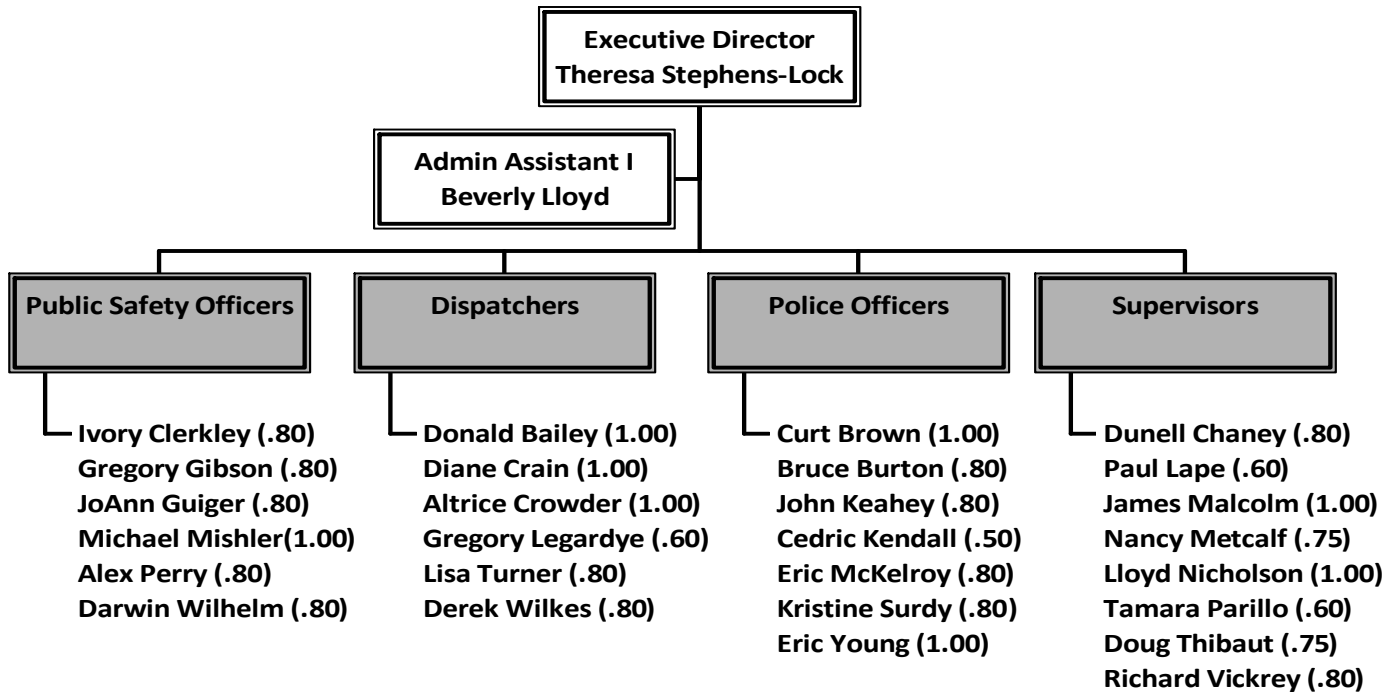
* Supplemental TAP

Planning, Research & Quality Initiatives

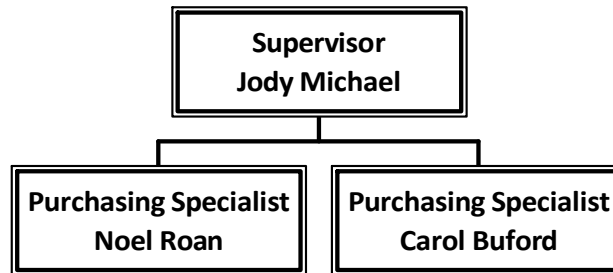
February 28, 2010



Public Safety
February 28, 2010

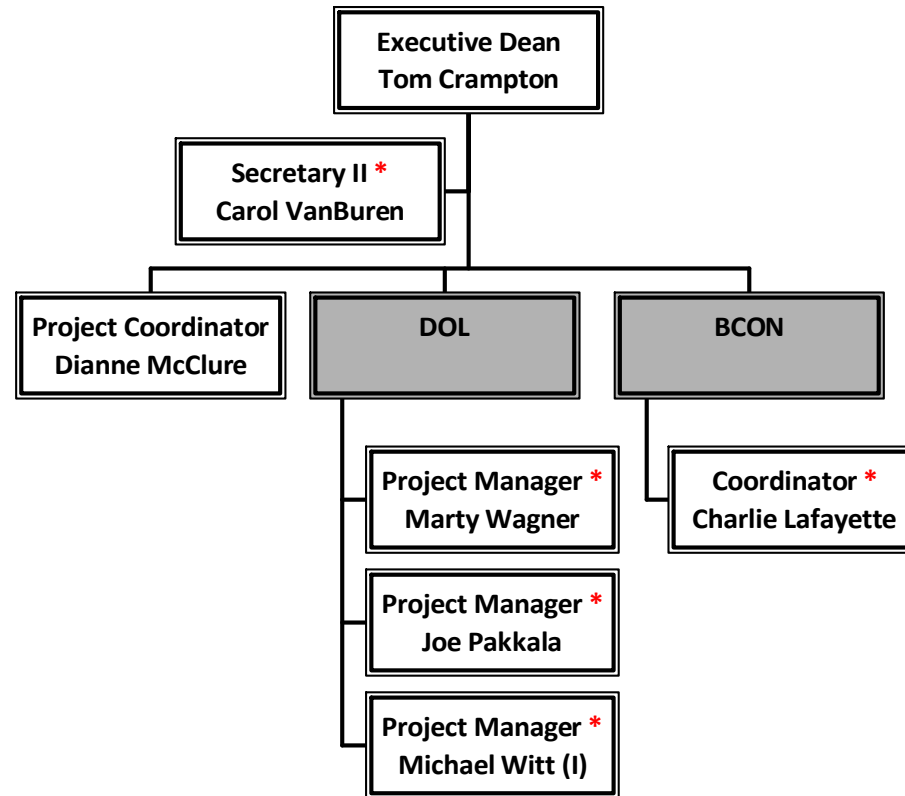


Purchasing
February 28, 2010



Regional Technology Initiatives

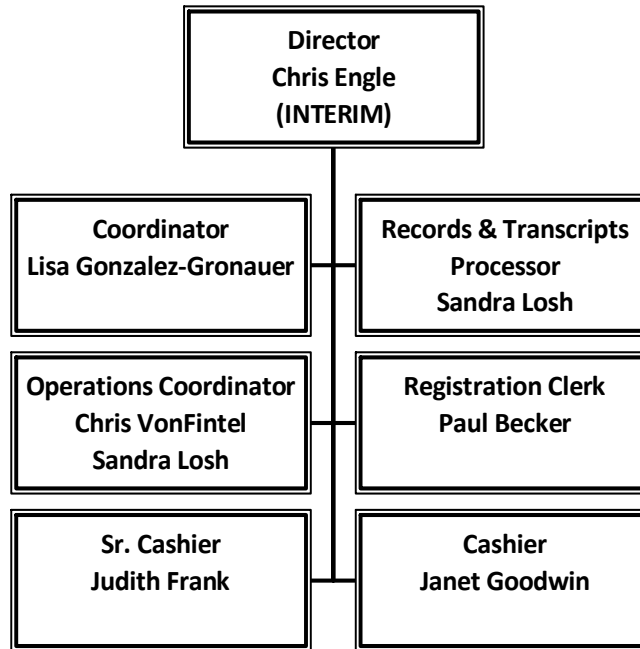
February 28, 2010



* Supplemental TAP

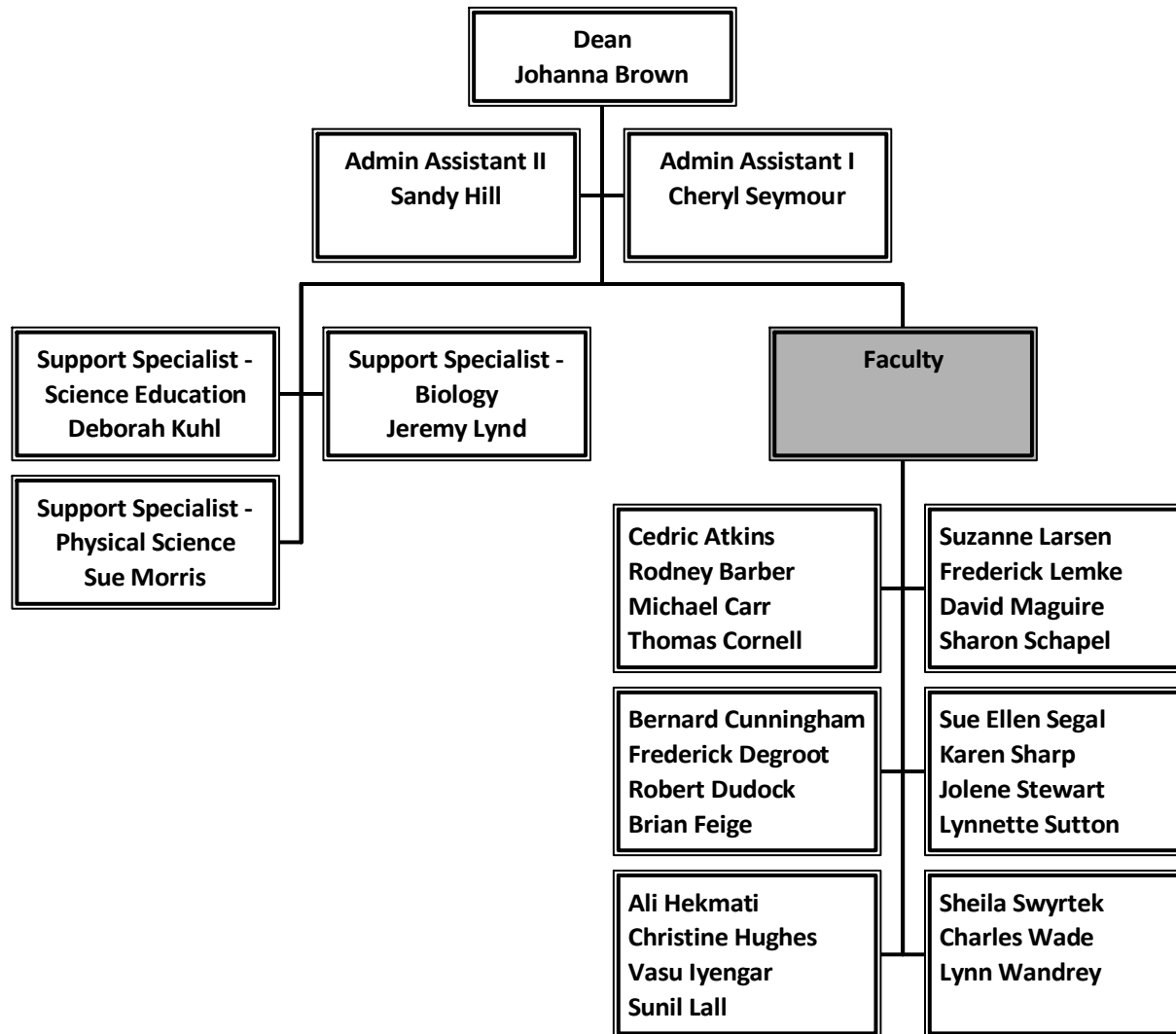
Registrar & Registration

February 28, 2010



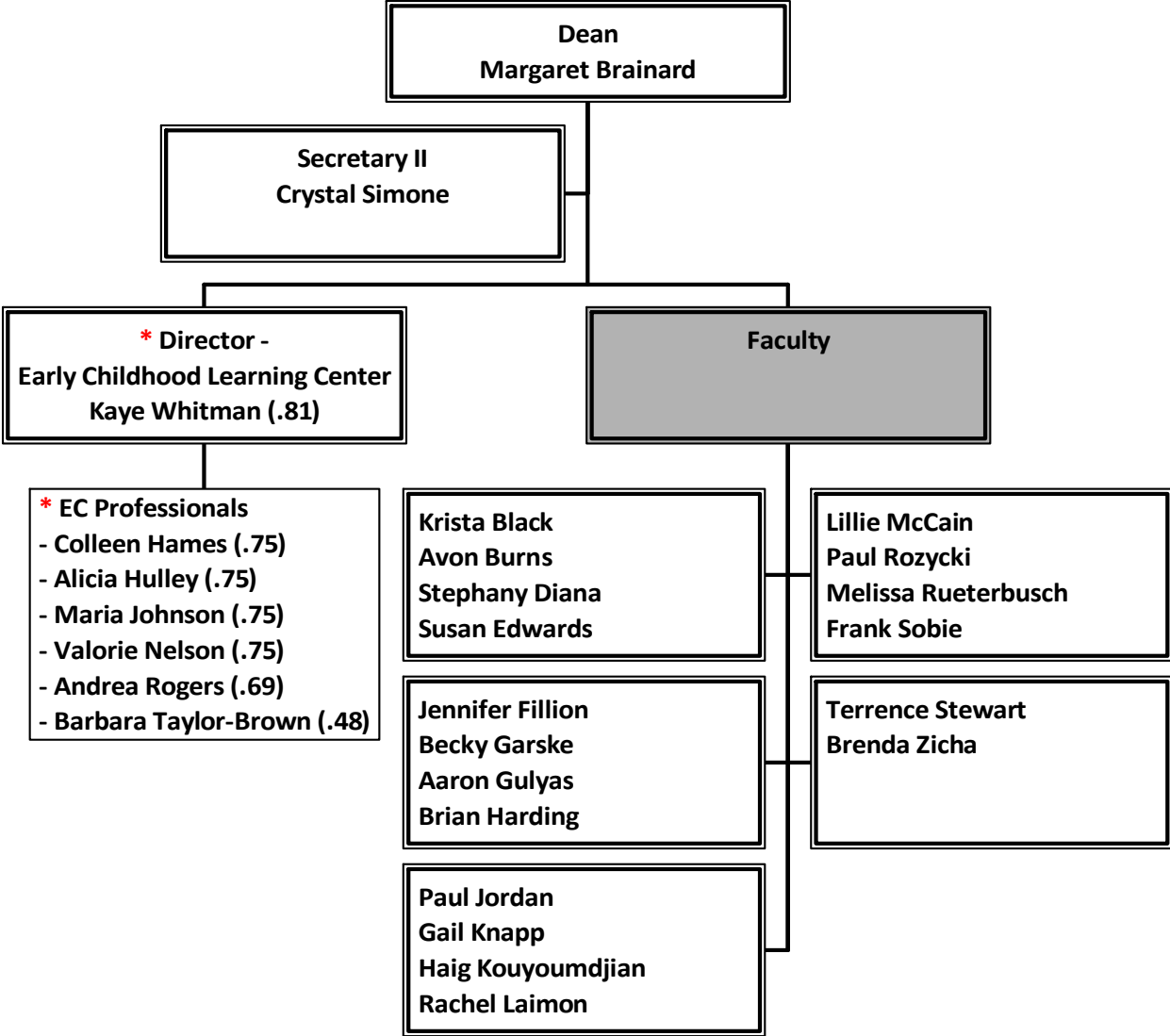
Science & Math

February 28, 2010



Social Science

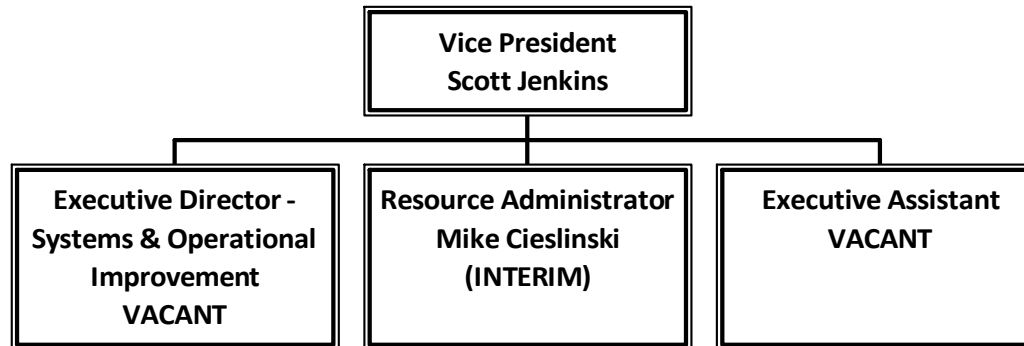
February 28, 2010



* Supplemental TAP

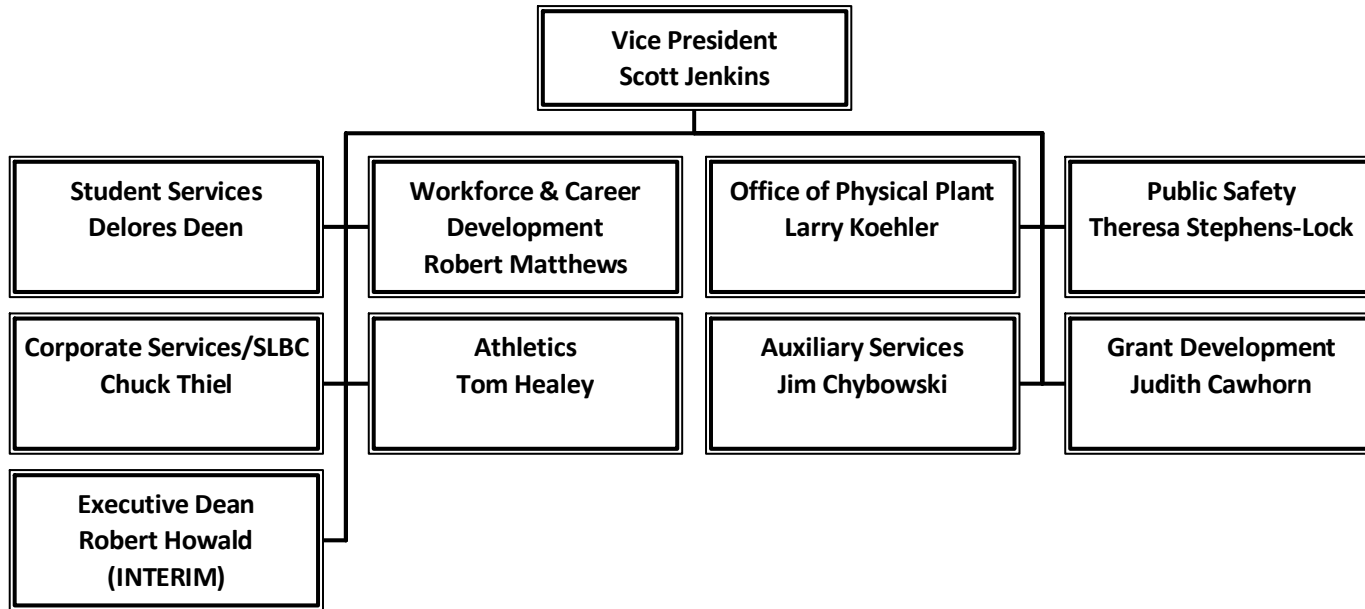
Student & Administrative Services (Office of the Vice President)

February 28, 2010



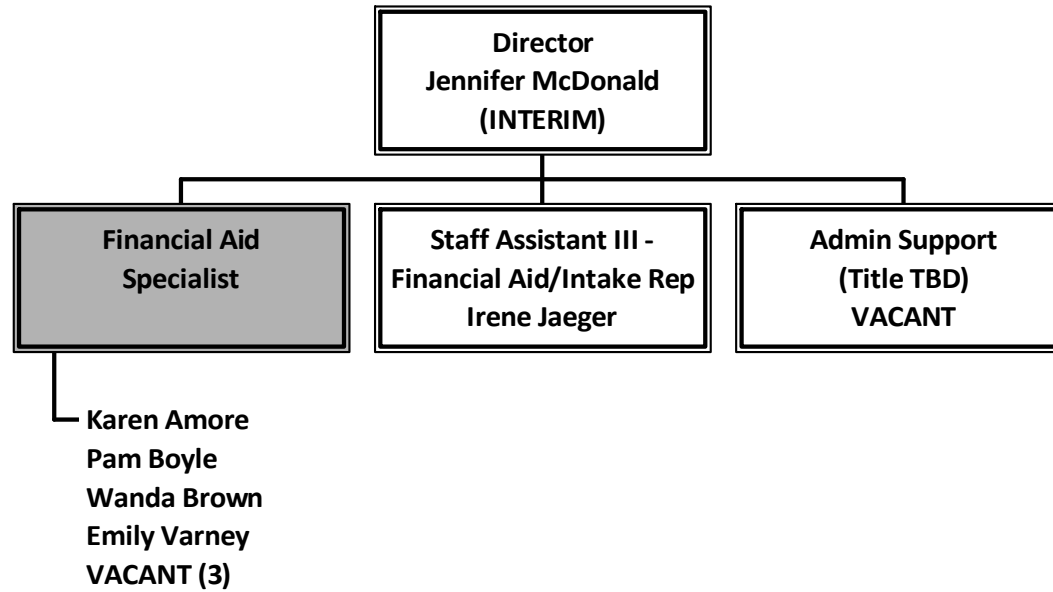
Student & Administrative Services (Overview)

February 28, 2010



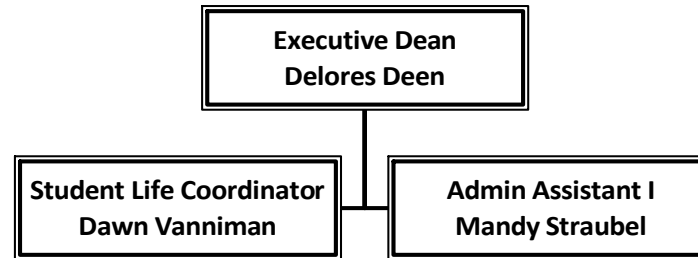
Student Financial Services

February 28, 2010



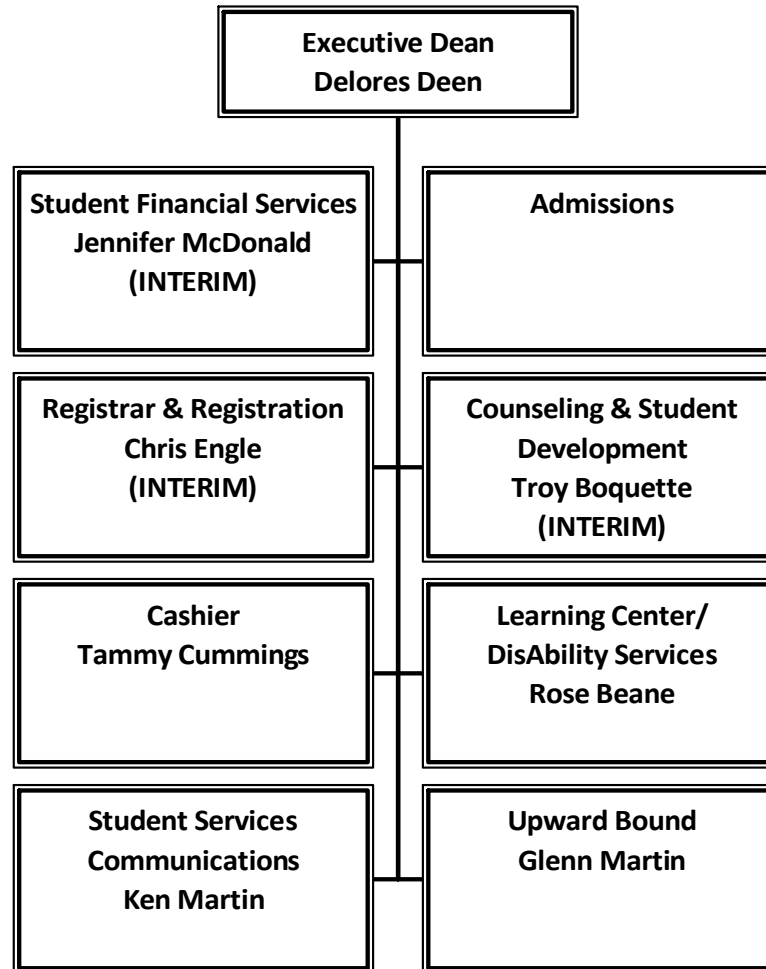
Student Services (Office of the Executive Dean)

February 28, 2010



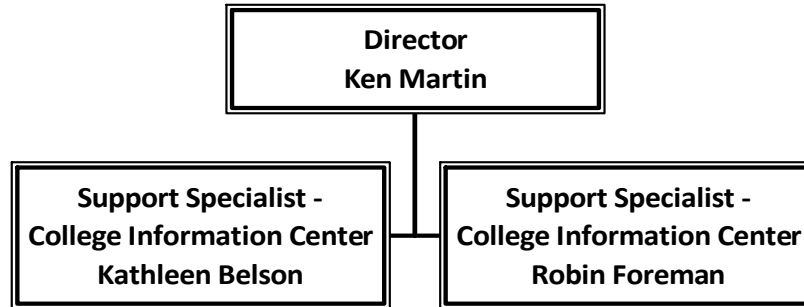
Student Services (Overview)

February 28, 2010



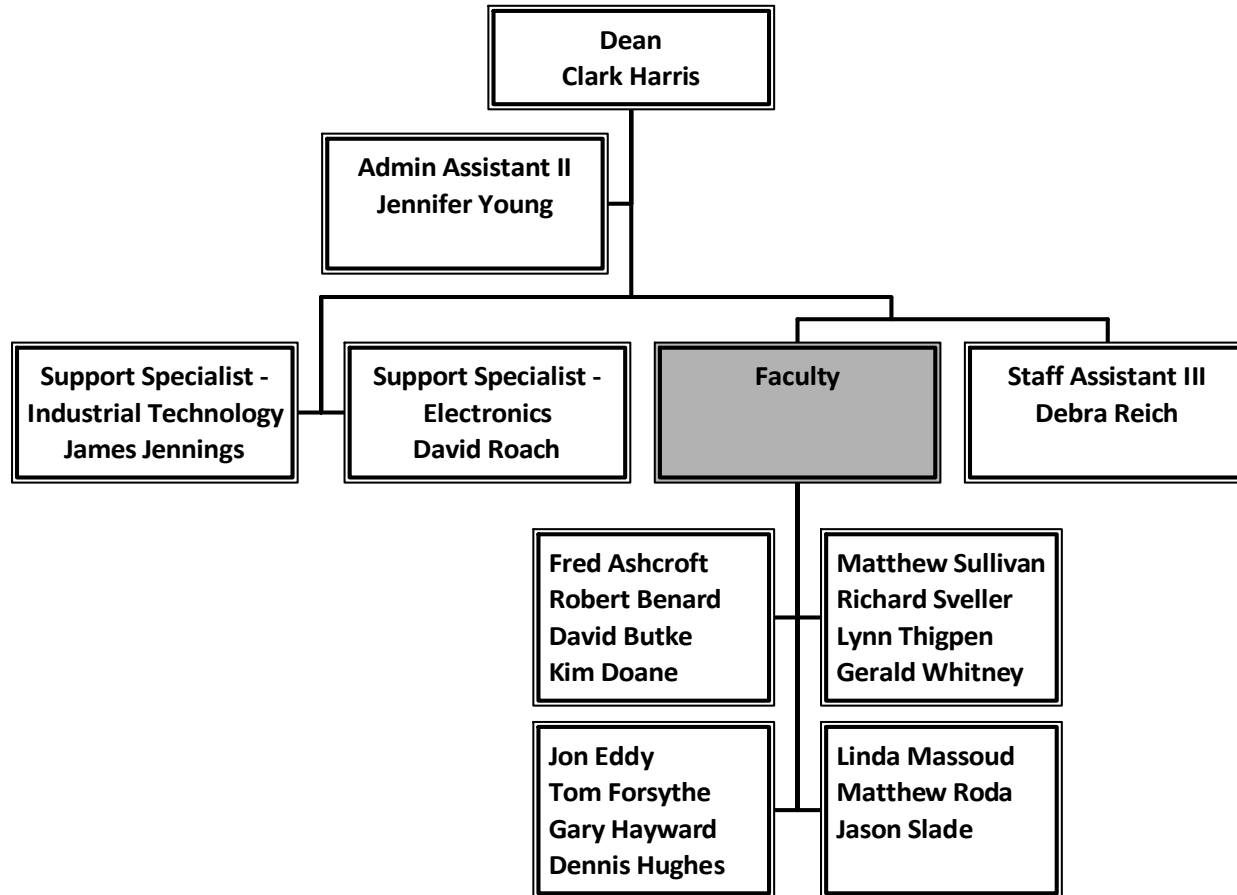
Student Services Communications

February 28, 2010



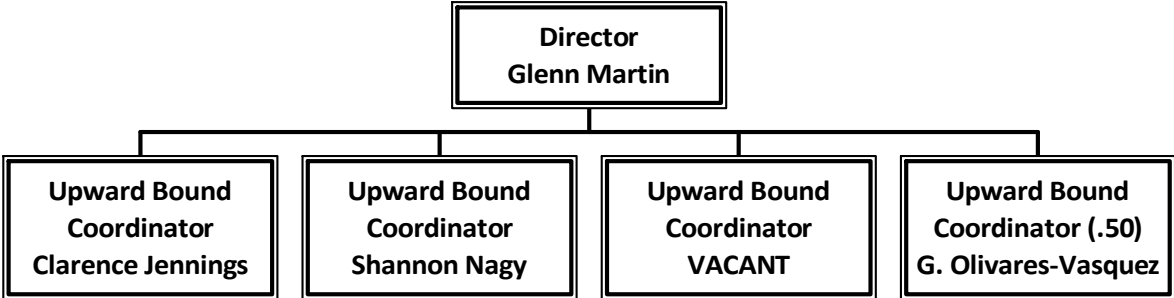
Technology

February 28, 2010



Upward Bound Programs

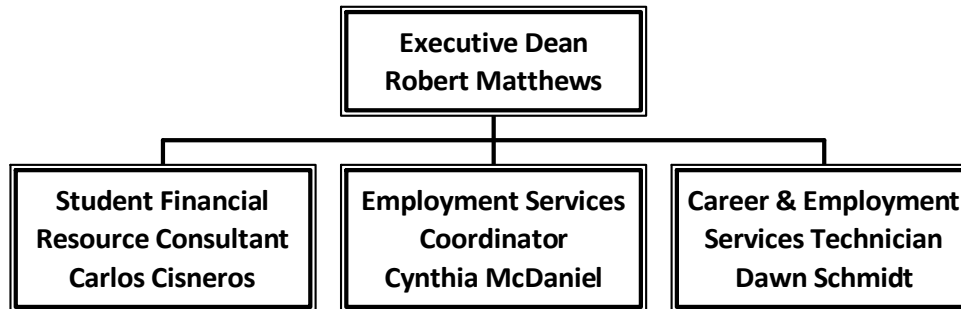
February 28, 2010



* Supplemental TAP

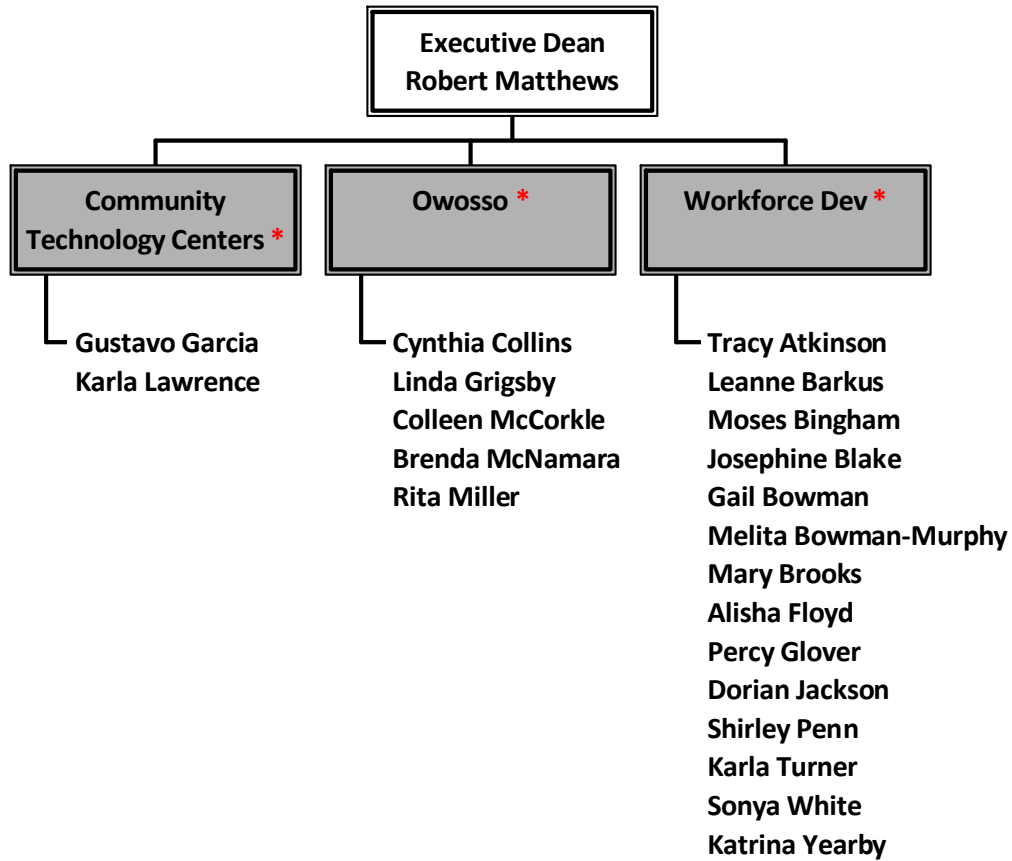
Workforce & Career Development

February 28, 2010



Workforce & Career Development (Grant-Funded)

February 28, 2010



*** Supplemental TAP**